



*Nurture the seed and it will thrive - Poipoia te kākano kia puawai*

**NEWSLETTER EIGHT, TERM THREE**

**Wednesday, 16<sup>th</sup> September 2020**

**Contacts:**

**Phone:** 939 9707 **txt:** 027 3710 947 **fax:** 939 9708 **Teeth:** 0800TALKTEETH **KCC Cellphone:** 027 241 3028

**PRINCIPAL:** Dave Lamont [principal@koraunui.school.nz](mailto:principal@koraunui.school.nz)

**BOARD OF TRUSTEES:** Craig Press [BoT.Chair@koraunui.school.nz](mailto:BoT.Chair@koraunui.school.nz), [chris.miller@koraunui.school.nz](mailto:chris.miller@koraunui.school.nz),  
[Gillian.McPeake@koraunui.school.nz](mailto:Gillian.McPeake@koraunui.school.nz), [janie.tito@koraunui.school.nz](mailto:janie.tito@koraunui.school.nz), [shane.doherty@koraunui.school.nz](mailto:shane.doherty@koraunui.school.nz),  
[spencer.hiess@koraunui.school.nz](mailto:spencer.hiess@koraunui.school.nz)

**KIA ORA, TALOFA LAVA, AND WELCOME.**

**KORAU VALUES**

As we head into the last few weeks of Term 3, we continue to focus on our KORAU values and how these can be displayed through words and actions. We have noticed that there is a lot of tired people around and now is a time to be patient and tolerant of others.

Our KORAU values are:

<b>K</b>	<b>Kind/Manaakitanga</b>	We show Kindness to people and the environment.
<b>O</b>	<b>Own/Rangatiratanga</b>	We Own our own behaviour.
<b>R</b>	<b>Respect/Whakaute</b>	We Respect the rules, people, and the school.
<b>A</b>	<b>Aspire/Wawata</b>	We do quality work and strive for excellence.
<b>U</b>	<b>Unite/Whanaungatanga</b>	We work as a team / whanau. We are inclusive.

**Te Wiki o te Reo Maori - MAORI LANGUAGE WEEK**

We have been celebrating Te Wiki o te Reo Maori - Maori Language Week at school this week and it has been fantastic to hear waiata sung so beautifully around the school.

This week is a chance for us all to focus on improving out te Reo and joining together to keep the language alive.

We joined about 1,000,000 people around the country singing waiata at 12.00pm which was a great way to start the week off together.



**COVID-19 Alert Level 2**

It looks like we are remaining at Alert Level 2 for at least one more week. In the meantime we will continue to follow the Alert Level 2 guidelines. We will review these once a decision has been made by the government.

Below are the guidelines we ask parents/caregivers and whanau to follow.

### **Start of Day Drop off**

All children are to come in through the front gate in the morning. *All other gates will be locked during the day.* **We are asking all parents/caregivers and whanau to remain outside the school gates.**

- **Any adult or family member who NEEDS to come on site must register** using either the COVID-19 Tracer App and QR code provided or the paper register. The COVID-19 register can be downloaded at Apple App store or Google Play. This is for contact tracing purposes. All information will be held at the school.
- Any children arriving at school between 8.30-9.00am will need to go straight to their classroom. Any children arriving after 9.00am will need to check in at the office.



### **End of Day Pick-up**

**We are asking all parents/caregivers and whanau to remain outside the school gates.**

**Your children will be delivered to you 😊**

- At the end of the day we will have three pick-up points to avoid congestion and to help us manage distancing at school. Pick up for family groupings - the oldest child to collect siblings and then go to the youngest child's collection point.
- Main School Gate: Kowhai Block – Rooms 8, 9, 10 & 11
- Montgomery Street “Matt’s Gate” – Rooms 12, 13, 14 & 15
- Hall Entrance Gate – Rooms 1, 23, 4 & 5

A teacher will be on the gate – 10 minutes before school finishes to help manage children leaving the school grounds.

**ALL OTHER GATES AROUND SCHOOL WILL BE LOCKED AT ALL TIMES.**

### **SICK CHILDREN**

**If you are keeping children home, PLEASE CONTACT THE OFFICE.** We are continuing to ask that even if children are feeling slightly unwell, they need to remain at home and parents contact school.

If children display any signs of illness at school, we will put a face mask on them, put them in the medical room and contact parents/caregivers to come and pick them up.

**All children are expected to attend school unless they are unwell.**

**Morning Tea & Lunch breaks** – children will eat at their desks/tables inside their classrooms – 10 minutes morning tea, 15 minutes at lunch time.

**Drinking Fountains** – these will remain closed while we are in Alert Level 2. Children are to bring named water bottles to school.

**THERE IS TO BE NO SHARING OF FOOD OR DRINKS AT SCHOOL.**

## YEAR 6 KAITOKE TRIP

The Year Sixes went on a fantastic trip to Kaitoke Regional Park yesterday. The kids got to walk across swing bridges, skim stones at the river, have a BBQ and re-enact Lord of the Rings, what more could you ask for!! The kids displayed wonderful KORAU values and came back buzzing. Ka rawe koutou! Mr G, Matua Tim and Mrs K.



## HEAD LICE



We have been informed by some parents that their children have headlice. We ask that you please check your children's hair, especially if you notice them scratching. Information about preventing the spread of headlice can be found at the following website <https://www.kidshealth.org.nz/head-lice>. We have some treatment products available at school. Please contact the school office for advice and support.

## CHILDREN'S CLOTHING

We have a lot of lost property gathering around the school again, mostly un-named. Please make sure all clothing is named and check your children are bringing their clothing home with them each day. Please check the lost property for any of your children's clothing. Clothing not claimed will be donated.



**50 Cent Stalls** – No 50 cent stalls again this week. We will reassess this next term.

## ENROLMENTS

Do you have or know of any 5-year old children who are starting school this year or next? New student enrolment forms are available at the office or on our website under "About us". If you require further information, please contact the office on 939 9707 or message us on our school website or Facebook page.

## SPORTS NEWS

**Touch Rugby** – the season is quickly approaching, and we are looking for children (especially Year 3 & 4's) and coaches for our Koraunui School teams. **All names need to be in by TODAY Wednesday 16 September.** If you are interested in your children playing or if you can help with coaching please comment on the touch rugby Facebook post or contact Whaea Kataraina.





**Weetbix Tryathlon** – permission forms for next year’s Weetbix triathlon will be sent home with tamariki this week. **Please do not enter online or send money** in yet as I am applying for funding again this year. **All entries need to be in by 14 October 2020.**

Ngā mihi Kataraina.



**LUCKY BOOK CLUB** – **only online orders are being taken.** No cash will be accepted at school. **All orders for Term 3 need to be in by Friday 25 September. This has been extended by 2 weeks.**



## WHATS COMING UP THIS TERM?

### Term 3

Week 9

- Tuesday 15 September: Room 12 trip to Raranga Matihiko
- Thursday 17 September: Room 12 trip to Raranga Matihiko
- Friday 18th September: Kauri Team Rooms 1-5 Island Bay Marine Centre

Week 10

- Monday 21 & Tuesday 22 September: Multi sports Festival for selected students
- Tuesday 22 September: Rimurimu citizen science field trip all day 1213
- Thursday 24 September: Rimurimu citizen science field trip, *postponement day.*
- Friday 25 September: End of Term 3

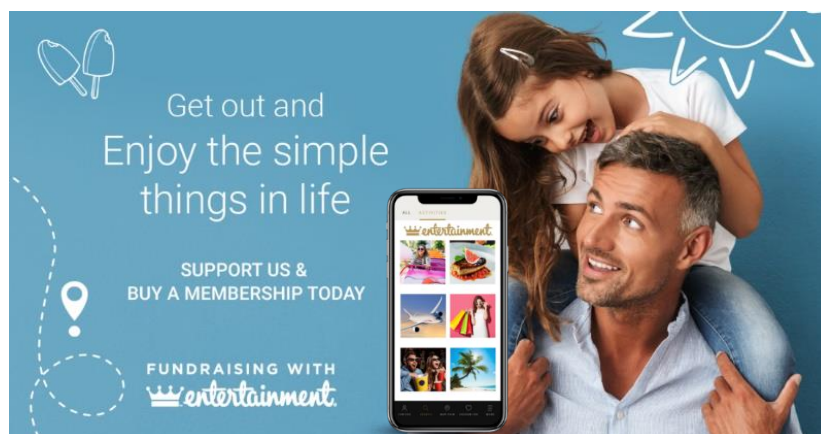
Kia pai te ra kia koutou – have a great week everyone

Dave Lamont

Principal

### ENJOY THE SIMPLE THINGS WHILST SUPPORTING OUR SCHOOL!

**Koraunui School are selling Entertainment Digital Memberships as part of this year’s fundraising initiative and we would love your support. Get out and enjoy what your local community has to offer!**



Entertainment Digital Memberships are convenient, easy to use and packed full of valuable 2 for 1 and up to 50% off offers for you to use over 12 months from activation. Enjoy offers from your local hospitality favourites and much, much more!

Buy online to **support us** today by clicking the below link

<https://www.entertainmentbook.co.nz/orderbooks/1050q02>

Thank you for your support!